



Global Project Linking:

To link nor not to link; that is the question

PRESENTED BY

Paul Pehrson | @docguy

Certified Flare trainer

DocGuy Training

Paul Pehrson

Flare user for 13 years
Flare trainer for 11 years
Owner of DocGuy Training

Flare Forums: [doc-guy](#)
Twitter: [@docguy](#)
Web: [docguy.training](#)



WHAT WE'LL COVER

- What is global project linking?
- Why use global project linking?
- Setting up the link
- Working with both projects
- Tips for the child project
- What about source control?
- Is GPL right for me?

WHAT IS GLOBAL PROJECT LINKING?

- **WHY USE GLOBAL PROJECT LINKING?**

- GPL is an advanced form of single sourcing.
- In this case you're single sourcing topics, images, stylesheets, page layouts, masterpages, etc. from one project to another.
- Changes made in the parent project are imported into the child project helping you maintain style and consistency across multiple projects.

Linking allows you to share content between

the global project, or parent project.

- The other project is the child project

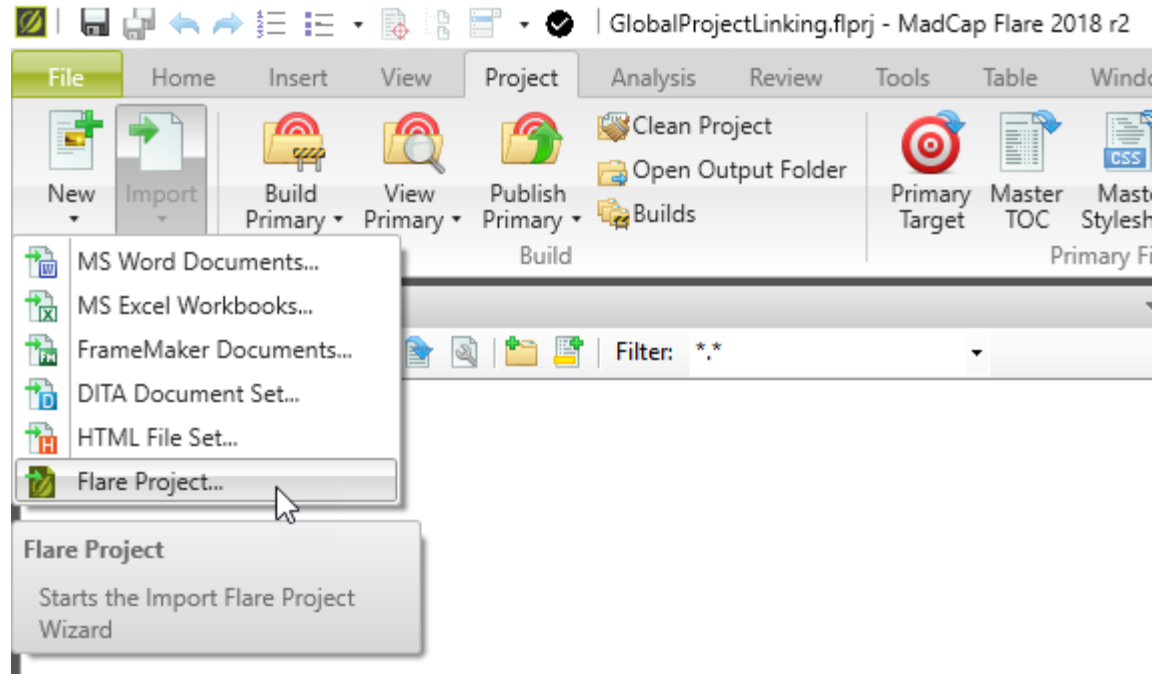
DOCGUYTraining

WHY USE GLOBAL PROJECT LINKING?

- GPL is an advanced form of single sourcing.
- In this case you're single sourcing topics, images, stylesheets, page layouts, masterpages, etc. from one project to another.
- Changes made in the parent project are imported into the child project helping you maintain style and consistency across multiple projects.

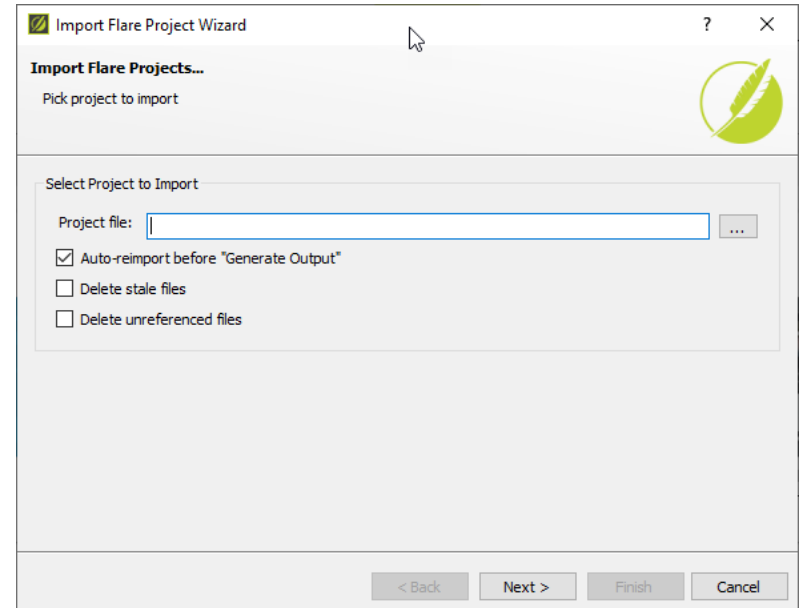
SETTING UP THE LINK

- In the Project ribbon, click Import > Flare Project...



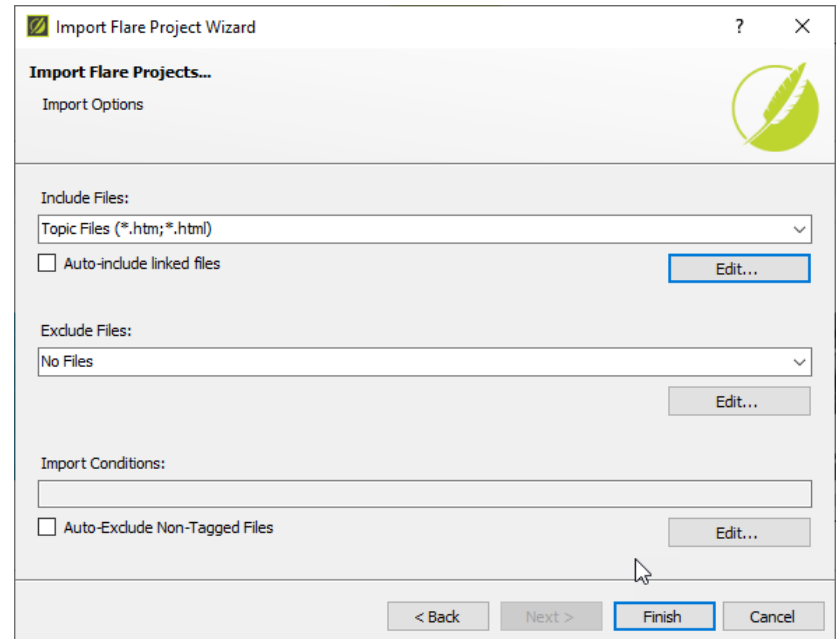
SETTING UP THE LINK – SELECT PROJECT

- Select the parent project
- Leave “Auto-reimport” option selected.
- For an explanation of the other two options, see:
<https://help.madcapsoftware.com/flare2018r2/Content/Flare/Global-Project-Linking/GPL-Importing-Files.htm>



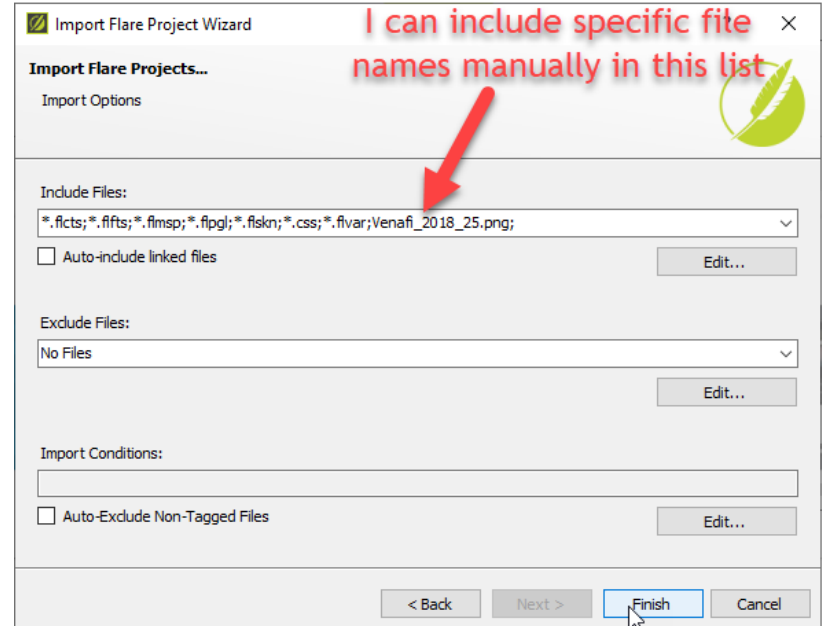
SETTING UP THE LINK – PICKING FILES

- Pick the types of files you want to include and exclude.
- I recommend including:
 - Condition tag set
 - File tag set
 - Master page
 - Page Layout
 - Skin
 - Stylesheet/Table Style (both *.css)
 - Variable Set



SETTING UP THE LINK – PICKING FILES

- If there are specific content files you want, you can manually add them to the list



WORKING IN BOTH PROJECTS

- You can open a second project at the same time by right clicking on the Flare icon in the Windows task bar.
- Changes to imported files must be made in the parent project.
- Imported files have a link icon overlay so you can see that they come from the parent project.
- You can choose to break the link to the parent project, but beware that you'll never get any updates for that file again.

TIPS FOR THE CHILD PROJECT

- CSS: If you need to define specific styles for the child project, and you don't want those styles in the master project create a new CSS file in the same folder as your one, and open it in the text editor.

WHAT ABOUT SOURCE CONTROL?

- If you are using source control, my recommendation is to keep both projects in the same source control repository, in separate folders for each project.

At the top of the new CSS file enter the following:

```
url(Styles.css);
```

- (Replace Styles.css with the name of the imported style sheet)

WHAT ABOUT SOURCE CONTROL?

- If you are using source control, my recommendation is to keep both projects in the same source control repository, in separate folders for each project.

IS GPL RIGHT FOR ME?

Single Project

- Lots of shared content files
- Prefer simplicity in managing project

Multiple Projects with GPL

- Minimal shared content files
- Want style consistency across projects

Thank you!

Visit my website: www.docguy.training

Please fill out the feedback form and rate this session

Contact me at:

PaulPehrson | @docguy | paul@docguy.training

This presentation (with updates) is also available at:

<https://docguy.training/2019/04/global-project-linking/>