



Creating a Contemporary “Print” PDF Design with MadCap Flare

PRESENTED BY

Nate Wolf

AGENDA

1

The Great Debate + a disclaimer

2

Designing Traditional PDF Documents

3

Designing Digital PDF Documents

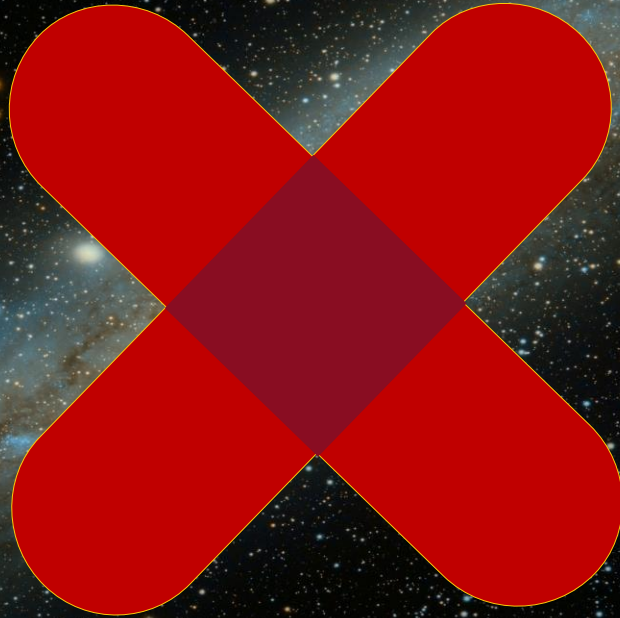
4

Design Demo

5

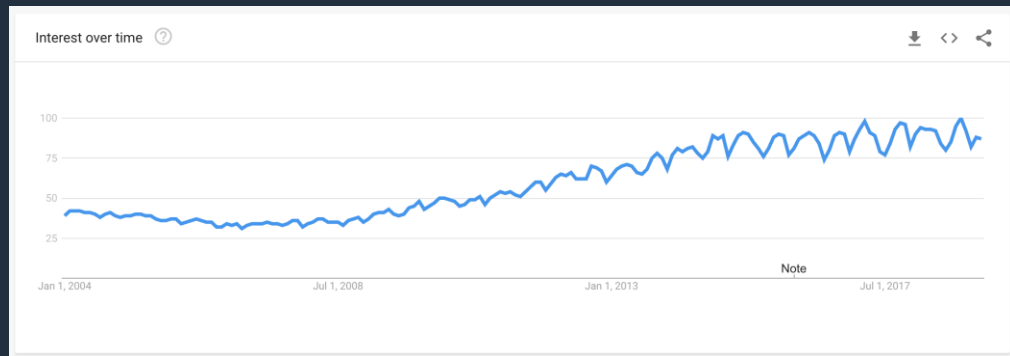
Questions

THE GREAT DEBATE



HTML VS. PDF

- Use BOTH!
- People love them some PDFs!



Disclaimer



Release Notes
White Papers
Data Sheets
Spec Sheets
Quick Start Guides



Printed Docs
Hardware Guides
Software User Guides



Designing Traditional PDFs



CONTENTS

CHAPTER 1

Planning Your Upgrade 1

ASA Upgrade Checklist 1

Compatibility 3

ASA and ASDM Compatibility Per Model 3

ASA 9.10 to 9.5 4

ASA 9.4 to 9.3 5

ASA 9.2 to 9.1 6

ASA and ASA FirePOWER Module Compatibility 7

FMC-Device Version Compatibility 11

Firepower 4100/9300 Compatibility with the ASA or Firepower Threat Defense 12

Radware DefensePro Compatibility 15

Upgrade Path 15

ASA Upgrade Path 15

ASA FirePOWER Upgrade Path with ASDM 22

ASA FirePOWER Upgrade Path: with FMC 24

Firepower Management Center Upgrade Path 25

Firepower 4100/9300 Upgrade Path 27

Download the Software from Cisco.com 28

Download ASA Software 28

Download ASA FirePOWER Software 35

Download Firepower Management Center Software 37

Download from the FMC Updates Page 37

Firepower Management Center Upgrade Packages 38

Download Guidelines for High Availability FMCs 39

FXOS for Firepower 4100/9300 Chassis Upgrade Packages 39

Important Guidelines Before You Upgrade 40

High-res images



Injecting empty
pages



Roman Numerals





CHAPTER 1

Planning Your Upgrade

Before upgrading the ASA, you should perform the following preparation:

- Check compatibility between different versions of operating systems; for example, make sure that the ASA version is compatible with the ASA FirePOWER module version.
- Check the upgrade path for the current version to the target version; ensure you plan for any intermediate versions required for each operating system.
- Check for guidelines and limitations that affect your intermediate and target versions, or that affect failover and clustering zero downtime upgrading.
- Download all software packages required from Cisco.com.
- Back up your configurations, especially if there is a configuration migration.

The following topics explain how to upgrade your ASA.

- ASA Upgrade Checklist, on page 1
- Compatibility, on page 3
- Upgrade Path, on page 15
- Download the Software from Cisco.com, on page 28
- Important Guidelines Before You Upgrade, on page 40
- Back Up Your Configurations, on page 50

ASA Upgrade Checklist

To plan your upgrade, use this checklist.

1. ASA model (ASA Upgrade Path, on page 15): _____
Current ASA version (ASA Upgrade Path, on page 15): _____
2. Check the ASA/ASDM compatibility per model (ASA and ASDM Compatibility Per Model, on page 3).
Target ASA version: _____
Target ASDM version: _____
3. Check the upgrade path for ASA (ASA Upgrade Path, on page 15). Are there intermediate versions required? Yes ____ No ____

Chapters starting on
right page



Alternating page
layouts



If yes, intermediate ASA version(s): _____

4. Download the target and intermediate ASA/ASDM versions (Download ASA Software, on page 28).



Note

ASDM is included in the ASA for FXOS package.

5. Do you have an ASA FirePOWER module? Yes ____ No ____

If yes:

1. Current ASA FirePOWER version: _____

View your current version: ASDM (ASA FirePOWER Upgrade Path with ASDM, on page 22) or Firepower Management Center (Firepower Management Center Upgrade Path, on page 25).

2. Check ASA/FirePOWER compatibility (ASA and ASA FirePOWER Module Compatibility, on page 7).

Target ASA FirePOWER version: _____

3. Check the upgrade path for ASA FirePOWER (ASA FirePOWER Upgrade Path with ASDM, on page 22 or ASA FirePOWER Upgrade Path: with FMC, on page 24). Are there intermediate versions required? Yes ____ No ____

If yes, intermediate ASA FirePOWER version(s): _____

4. Download the target and intermediate ASA FirePOWER versions (Download ASA FirePOWER Software, on page 35).

5. Do you manage the module using the Firepower Management Center? Yes ____ No ____

If yes:

1. Firepower Management Center model (Firepower Management Center Upgrade Path, on page 25): _____

Current Firepower Management Center version (Firepower Management Center Upgrade Path, on page 25): _____

2. Check the upgrade path for the Firepower Management Center (Firepower Management Center Upgrade Path, on page 25). Are there intermediate versions required? Yes ____ No ____

If yes, intermediate ASA FirePOWER version(s): _____

3. Check the Firepower Management Center compatibility with managed devices (FMC-Device Version Compatibility, on page 11). Make sure you plan to upgrade the ASA FirePOWER module in step with the Firepower Management Center upgrades.

4. Download the target and intermediate versions for the Firepower Management Center (Firepower Management Center Upgrade Packages, on page 38).

6. Is your ASA model a Firepower 4100 or 9300? Yes ____ No ____

If yes:

Designing Digital PDFs

What is a digital document?



Rethink our approach



*“Design is the silent
ambassador of your brand.”*

Paul Rand

DESIGNING DIGITAL DOCUMENTS



Cut Down Your Docs

How can I make my docs shorter but still thorough?



Devices

What options for devices people use to read PDFs?



Flare Design

What settings and design aspects make sense for non-"print" documents?

CUT DOWN YOUR DOCS

- Cut text ruthlessly
- Active voice
- UX content writing
- Design approaches



Documenting Inside Our Products

Documenting Inside Our Products



USER INTERFACE

Tetration

Tetration Configuration ⓘ

Help title

Help text can be here
([More...](#))

No Tetration Analytics configurations. Click Add new configuration to begin.

HOST IP ADDRESS

ex. 192.168.10.10 or !192.168.10.10

USER INTERFACE

Use the Update Manager page to apply software upgrades, updates, and patches. The SMC and Flow Collector must be on for at least 1 hour but no more than 1 week to be updated. For best results, perform the update procedures on each appliance in the following order:

- 1 All UDP Directors (also known as FlowReplicators) ⓘ
- 2 Flow Collector 5000 Series Databases
- 3 Flow Collector 5000 Series Engines
- 4 All other Flow Collectors
- 5 Endpoint Concentrator ⓘ
- 6 Secondary Stealthwatch Management Console
- 7 Primary Stealthwatch Management Console
- 8 All Flow Sensors

Upload

Upload one file at a time.

For important instructions, download the Stealthwatch Update Guide from the [Download & License Center](#).

DEVICES



Phones



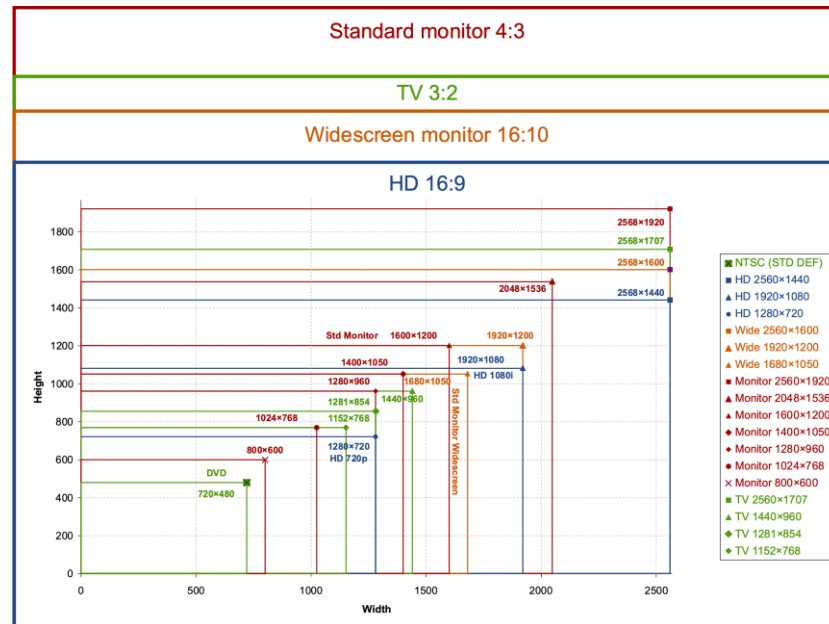
Tablets



Laptops



HD Monitor

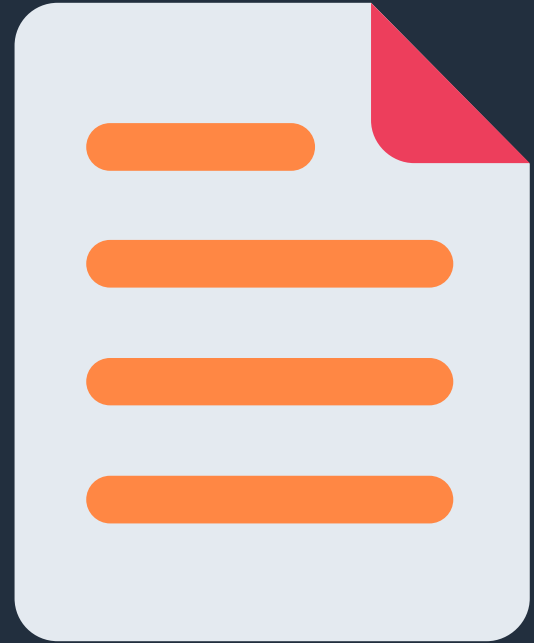


FLARE DESIGN



DESIGNING PAGE LAYOUTS

- Simple page layouts
- Landscape pages (or custom)



DESIGNING STYLESHEETS

- Use stylesheet mediums
- Bigger fonts (14pt body)



CREATING AND DESIGNING TOPICS

- Use cross-references
 - No conditions for print output
- Create topics to serve re-use
 - Title Page
 - TOC
 - Copyright Statement



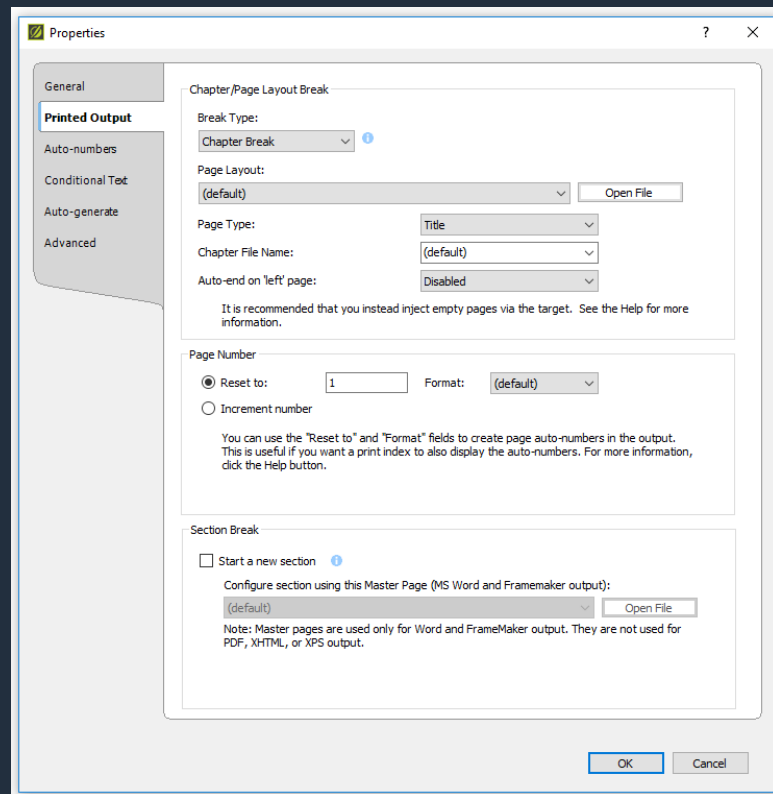
CREATING VARIABLES AND SNIPPETS

- Use variables to help re-use content
 - Version
 - Document Title
 - Product Name
- Use Snippets (and Snippet Conditions) for longer content
 - Copyright statements
 - Intro material



DESIGNING TOCS

- No roman numerals
- Disable auto-end
- Set Page Type



DESIGNING TARGETS

- Use stylesheet mediums
- Optional TOC page/proxy
- NO empty pages

The screenshot displays the 'Advanced' settings panel of a design tool. The left sidebar contains a list of categories: General, Conditional Text, Variables, Publishing, Glossary, Relationship Table, **Advanced**, Build Events, Language, PDF Options, and Warnings. The 'Advanced' panel is expanded, showing several sections of settings:

- Output Options:** Includes checkboxes for 'Use empty ALT text for images that do not have ALT text', 'Auto-size Capture objects to fit text', 'Generate TOC proxy' (checked), 'Generate index proxy', 'Generate glossary proxy', and 'Preserve tracked changes'.
- Stylesheet Medium:** A dropdown menu set to 'print'.
- Empty Page Handling:** A checkbox for 'Inject empty pages as needed to ensure TOC nodes start on their selected pages'.
- Expanding Text Effects:** A section titled 'Select how Expanding Text Effects should be converted to text:' with radio buttons for 'Convert to footnotes' (selected), 'Expand text inline', and 'Remove the "body"'. A blue information icon is present.
- Text Popup Effects:** A section titled 'Select how Text Popup Effects should be converted to text:' with radio buttons for 'Convert to footnotes' (selected), 'Expand text inline', and 'Remove the "body"'. A blue information icon is present.
- Multi-Document Native XPS/PDF Output:** A checkbox for 'Generate multiple documents for native XPS/PDF output'.
- Margins:** A checkbox for 'Collapse top margin at top of page/column' (checked).
- Generated TOC:** Includes checkboxes for 'Use TOC depth for heading levels' (checked), 'Inject headings for unlinked books in TOC', and 'Remove images from paragraphs with heading levels'.
- Redacted text:** A section titled 'Select how Redacted Text should be handled:' with radio buttons for 'Blackout' (selected), 'Highlight', and 'Display as normal text'.

DESIGNING TARGETS

- PDF Tagging
- NO “print” settings
- View settings

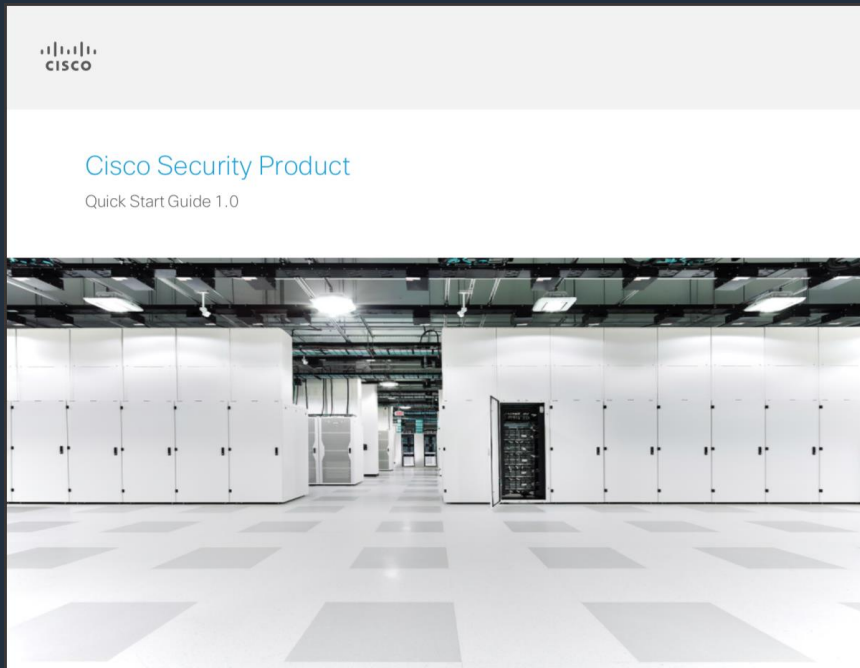
The screenshot shows the 'Designing Targets' dialog box in Adobe Acrobat, with the 'PDF Options' tab selected. The left sidebar contains a list of tabs: General, Conditional Text, Variables, Publishing, Glossary, Relationship Table, Advanced, Build Events, Language, PDF Options (highlighted), and Warnings. The main content area is divided into several sections:

- Image Compression:**
 - ☒ Downsample images above: 300 pixels per inch
 - Compression: Automatic
 - Quality: Maximum
- Document Properties:**
 - Title: [text input]
 - Author: [text input]
 - Subject: [text input]
 - Keywords: [text input]
- PDF Options:**
 - ☒ Include non-TOC bookmarks in the bookmarks pane
 - ☐ Create named destinations for bookmarks
 - ☐ Include Crop and Registration Marks
 - ☐ Convert RGB Colors to CMYK
 - ☐ Convert spot colors to black and white
- PDF Tagging:**
 - ☒ Generate tagged PDF
- Initial View:**
 - Magnification: Fit Page
 - Navigation: Bookmarks Panel and Page
 - Page layout: (default)
 - Title bar: File Name
 - ☐ Collapsed bookmarks
 - ☐ Open in full screen mode

DESIGN EXAMPLES



Landscape
pages



No need for high-res print quality
images, faster downloads

Optional TOC page



Table of Contents

Introduction	3
Overview	3
Installation	5
Configuration	6
Management Appliance	7

Copyright © 2019 Cisco Systems, Inc. All rights reserved.

- 2 -



No roman numerals, number matches
actual page number in PDF output

DESIGN EXAMPLES



Digital
functionality

Installation

Installation

Dictum fusce ut placerat orci nulla pellentesque dignissim enim. Magna ac placerat vestibulum lectus mauris. Ultricies mi quis hendrerit dolor. Aliquet porttitor lacus luctus accumsan tortor posuere ac. Sed turpis tincidunt id aliquet risus feugiat. Non curabitur gravida arcu ac tortor dignissim convallis aenean. Nibh sed pulvinar proin gravida hendrerit lectus a. Quis imperdiet massa tincidunt nunc pulvinar sapien et ligula ullamcorper.

⚠ Non curabitur gravida arcu ac tortor dignissim convallis aenean.

1. Lorem ipsum nulla facilisi nullam vehicula ipsum a arcu.
2. Etiam non quam lacus suspendisse faucibus interdum posuere.
3. Pharetra sit amet aliquam id diam maecenas ultricies.

Mattis ullamcorper velit sed ullamcorper morbi tincidunt omare massa eget. In hac habitasse platea dictumst vestibulum rhoncus. Nunc aliquet bibendum enim facilisis. Varius duis at consectetur lorem. Quisque sagittis purus sit amet. Eu mi bibendum neque egestas congue quisque egestas. Commodor nulla facilisi nullam vehicula ipsum a arcu. Ac turpis egestas maecenas pharetra convallis posuere. At consectetur lorem donec massa sapien faucibus et molestie ac. Egestas congue quisque egestas diam. Sagittis vitae et leo duis ut diam quam nulla porttitor.



Simple design and layout

Management Appliance

Management Appliance

1 Refer to [Configuration](#) for more information.

● - Performs at full capacity on hardware ○ - Supported, but performance not optimal x - Not supported

Appliance	Gen	v1	v2	v3	v4	v5	v6	v7	v8
Acme 1000	1G	●	●	○	○	○	x	x	x
Acme 2000	2G	x	x	●	●	●	●	●	●
Acme 3000	3G	●	●	○	○	○	x	x	x
Acme 4000	4G	●	●	●	●	●	●	●	○
Acme 5000	5G	x	x	●	●	●	●	●	●



Less pages, great for elements like tables

Thank You!

Questions?

